

USER INSTRUCTIONS

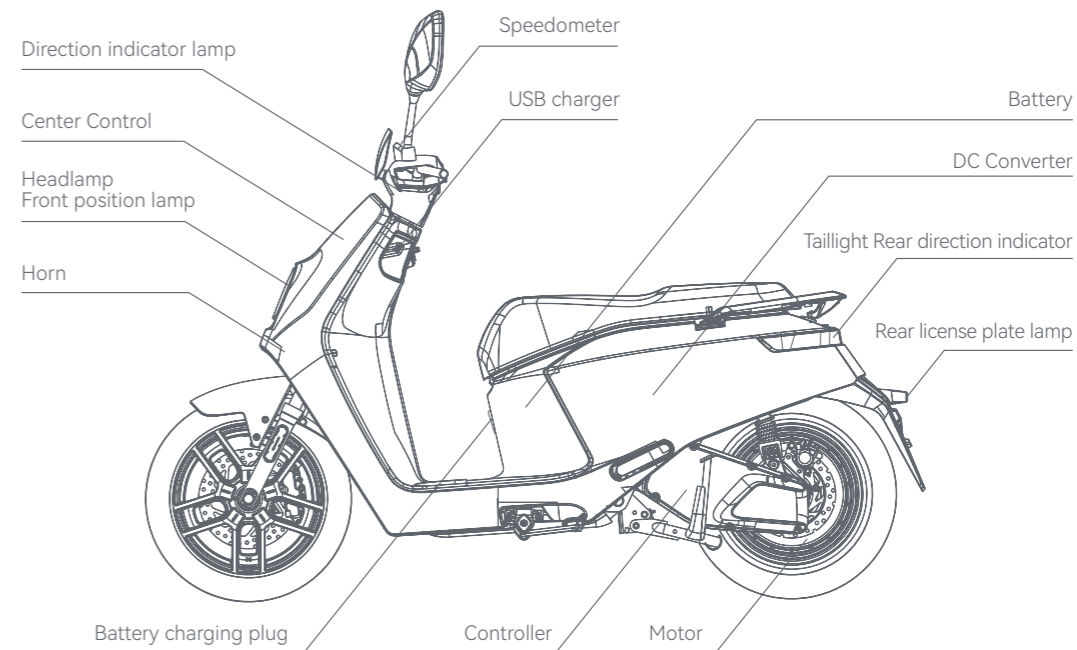
Welcome to the family of NCE owners! We will guide you to know each function for the right and safe use of electric scooters. To ensure your safety, please read this manual carefully before riding and make sure you are always following the requirements below:

- Fully understand the information in this manual, including but not limited to the relevant instructions, precautions and warnings.
- Fully understand the operation and contingency measures of electric scooters, Be fully aware of warning labels of electric scooters.
- We will not take any responsibility resulting from the unauthorized modification, failure to use original spare parts, or installation of components that affect the performance and safety of the scooter.
- Observe traffic regulations and traffic signs and confirm the surrounding road conditions and scooter conditions at any time to avoid danger.
- Perform a basic check each time before riding, so as to confirm the light, brake, tread and tire pressure and check other parts for looseness or abnormal noise.

- Wear safety equipment, such as helmet, and appropriate protective clothing if necessary, such as gloves and boots.
- Please do not make or answer any call during riding, which is likely to cause traffic accidents.
- In order to ensure the safety of you and others, please DO NOT use high beam in good lighting conditions. The continuous use of high beam will cause the visual disturbance to vehicles and pedestrians on the opposite side, thus affecting normal driving.
- Do not ride after you take medications, drink alcohol, or when you are unwell, which may affect your riding ability.

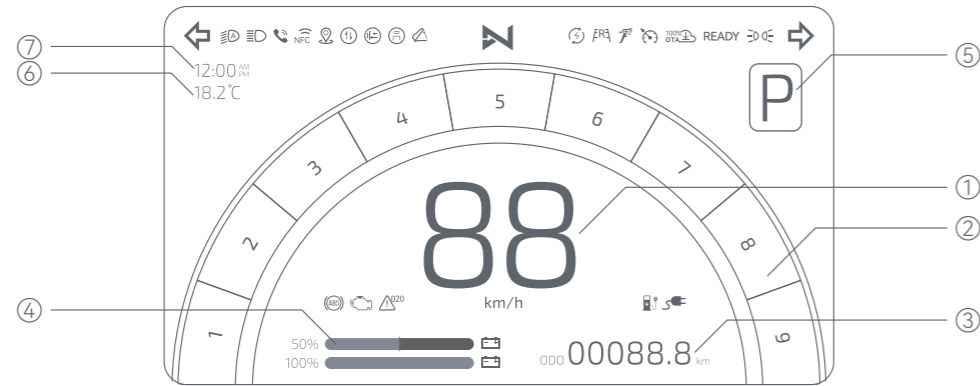
Please contact the Local Customer Service Center if you have any questions about this scooter. We are at our service at any time. Wish you safe and pleasant riding experience!

DESCRIPTION OF COMPONENTS AND PARTS



DESCRIPTION OF COMPONENTS AND PARTS

Diagram Of Instrument Panel



- ① Speed display- Display current speed
- ② Power - Display current motor power
- ③ Mileage - Display the total mileage and mileage per trip
- ④ Battery Power display bar- Display current dual batteries level
- ⑤ Gear - Display current gear,three gear shift modes
- ⑥ Temperature - Display current temperature
- ⑦ Time - Display current time

DESCRIPTION OF COMPONENTS AND PARTS

Symbol Indicator information Of Instrument Panel

Indicator light	Function	Indicator light	Function
	Left indicator light		Low Battery Indicator
	Right indicator light		Charging light
	Low beam indicator & Automatic headlight		OBD
	High beam indicator		Diagnostic Code
	Position light		Cruise Mode
	Parking light		GPS
	In Riding Mode		OTA Status update
	Side stand power off		Bluetooth connection
	Saddle opened		Network connection

OPERATION GUIDE

Rearview mirror installation

- ① Take out the Left and Right mirrors, insert the hole and rotate the mirror clockwise to the correct position.
- ② Tighten nuts on the rearview mirrors with a spanner to make sure the left and right mirrors are aligned on the same line and fit the driver's vision.



OPERATION GUIDE

Left Combination Switch

- ① High/Low Beam Light button
Press the upper part to switch to high beam; press the lower part to switch to low beam.
- ② Turn Signal Indicator button
Push the button left to turn on the Left Turn Signal Indicator; push the button right to turn on the Right Turn Signal Indicator. Push the button middle to turn off.
- ③ Horn button
Press to activate horn and release to stop.
- ④ Cruising Mode
Press the button to cruise at current speed. Press again to turn it off.



Right Combination Switch

- ① Gear shift button
Press "+" or "-" button to switch up and down the mode.
- ② Headlamp button
Push the button right to turn off the headlamp, push the button middle to turn it on and push the button left then the headlights turn on automatically according to the brightness of the environment.
- ③ Repair button
When there is fault warning, holding on the button will keep the scooter running in low speed, release will stop.
- ④ Hazard light button
Press to turn on the left and right turn signal indicators blinking at the same time, press again to turn off.



OPERATION GUIDE

Position:

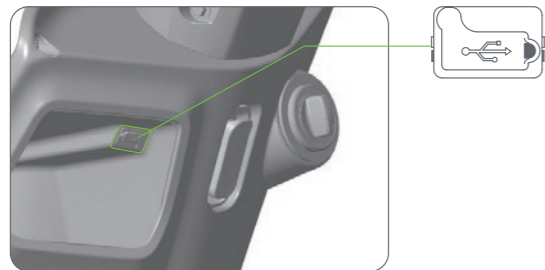
A USB charger can be found above the glove box of the scooter.

Output power: 5V 1A / 5 W

⚠ CAUTION

When the scooter travels a short distance, if using the USB charger, the device may be insufficiently charged.

1. When it's raining, do not use USB to charge your device.
2. Using USB to charge external devices may affect the cruising ability. It is recommended to use USB correctly.



USB Charger

OPERATION GUIDE

Position:

There is a holding hook beside glove box of the scooter.

⚠ CAUTION

Maximum load capacity of the hook—3kg



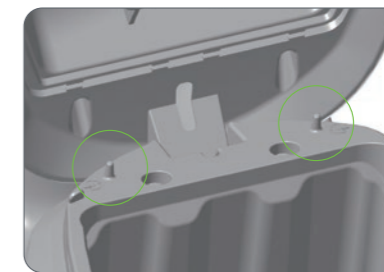
Hook

Placement of safety helmet:

1. Open the saddle and hang the helmet buckle on the hook.
2. Close the saddle and make sure the saddle is locked.

⚠ CAUTION

When riding, do not lock the helmet on the scooter to avoid danger.



Helmet hook

RIDING GUIDE

Checks before riding

Make sure to check the following items before riding a Electric Scooter, which will guarantee your safety on the road.:

- Whether the handlebar is stable and flexible when turning.
- Whether the rear mirrors are clean. Adjust them to the appropriate angle.
- Whether the brake oil is sufficient, and whether brake system can work normally.
- Check tire surface for cracks, damage, wear, and foreign matter puncture or attachment, Make sure the tire pressure is normal.
- The suggested tire pressure is 225kPa for front and rear wheel.
- Whether the battery is fully charged.
- Whether the switches on the right and left handlebars can work normally.
- Whether the head and tail lights, brake lights and wipers can work normally
- Whether the horn can work normally.

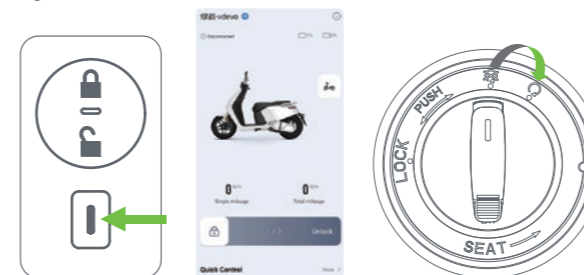
- Whether any fault warning light on the instrument panel goes on after being powered.

For any abnormality or operational concern, please contact local Customer Service Center.

RIDING GUIDE

Riding status confirmation

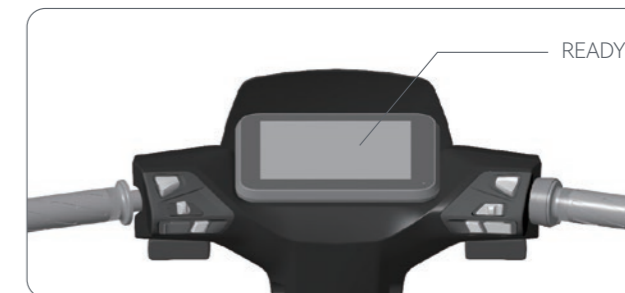
1. Open the scooter is powered (You can use the following three ways)
 - ① With the remote controller, approach the scooter and press the start button twice in two seconds.
 - ② To use the APP, slide the unlock bar button on the APP home page to the right.
 - ③ With the mechanical key, insert it into the main lock and turn it to the right direction.



CAUTION

After the mechanical key is used to power on, the permission is the first priority, so the mechanical key must be used when shutting down and the remote key and APP cannot be used to shut down.

2. After the scooter is powered on, the front and rear position lights will be turned on, while the instrument will start scanning.
3. Since there is a sensor bar embedded in the saddle, when the driver sits on the saddle, the P gear indication on the instrument will be released, and the READY light will light up, then the scooter will be ready to ride.



CAUTION

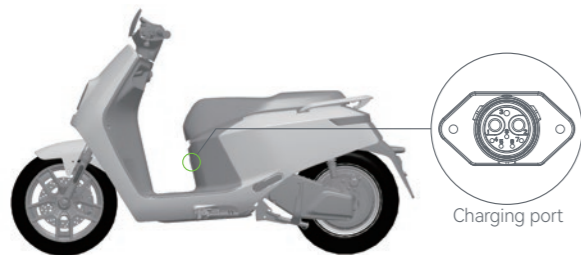
Before riding, wear a helmet and ensure that side stand has been put away and faucet lock is opened.

BATTERY USE INSTRUCTIONS

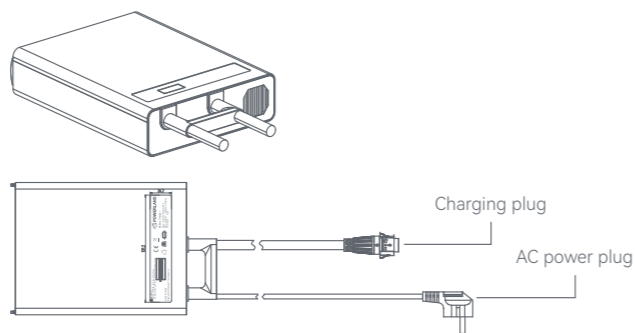
How to Charge the Battery

1-1. Charging on-board

Open the dust cover of charging port, plug the charging plug into it.

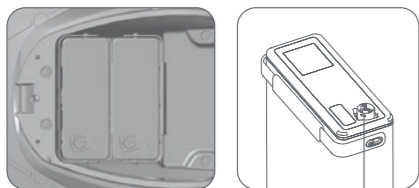


2. Insert the charger's AC power plug into the home power socket, when the charger indicator light is red, the battery is being charged. After the charger indicator light turns from red to green, charging is completed.



1-2. External charging

Open the saddle to take out batteries, insert the charging plug into the charging port of the battery, use parallel charging lines to charge at the same time.

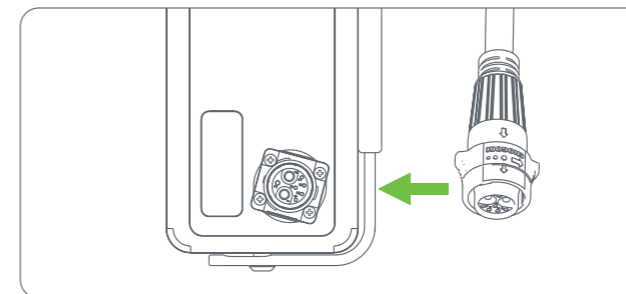


Battery charging port

BATTERY USE INSTRUCTIONS

Plug and unplug the power plug

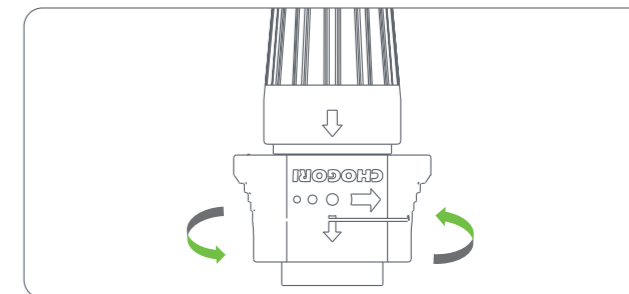
1. Align the 3 holes of the power plug and insert into the 3 pins of battery until there is a "click" sound.



CAUTION

If the plug is not properly inserted, the power plug and socket may be damaged.

2. As shown by the plug arrow, the plug can be pulled out by turning counterclockwise to the end and upward with plug shell.



BATTERY USE INSTRUCTIONS

Storage, Transportation

Please charge the battery to half-saturation state when storing or transporting it (after the battery is discharged, charge it for 3 hours).

Place it in a dry and ventilated place, Keep them away from corrosive materials, power source and heat source

Storage conditions: ambient temperature -20-35 °C, humidity <65% RH; Battery and charger should be kept in a clean, dry, and ventilated place.

Tips:

- This product has been subjected to strict inspection before leaving factory, and it is strictly prohibited to dismantle it.
- Only the specified charger can be used, and other chargers are prohibited to charge the battery.
- It is strictly forbidden to throw it into the fire; Violent movements, shock and extrusion are prohibited
- Do not expose the battery to water, and prevent it from being damped by water or rained.
- Battery capacity will be reduced when placed in a low-temperature environment.
- If the battery is found to be overheated during charging, please leave it for 1 hour before charging.
- Charge the battery when you use it, but make sure to charge it before the capacity is lower than 20%.
- When it is not used for a long time, please remove it from the scooter.
- After long-term storage, please fully charge the battery before use.

ROUTINE CLEANING AND MAINTENANCE

Cleaning:

Please disconnect the air switch before cleaning.

Please use clean water and neutral detergent to clean it, and use soft cloths and sponges to clean the surface;

It is prohibited to use metal brushes, sandpaper or the like to clean it, in order not to scratch the parts surface.

Do not use strong water jet to directly wash it, so as to avoid the default of mechanical parts caused by water invasion.

Regular Inspection and Maintenance:

Regular maintenance can improve the service life and driving safety of the electric scooters.

Please refer to the following suggestions and take care of your scooter.

The new scooter must be subject to the first inspection and maintenance in the Service Center when it reaches 1,000 km or two months (whichever comes first)

The scooter is recommended to be subject to regular inspection and maintenance in the Service Center at every 3,000 km or six months (whichever comes first).

